

# REFLECTING, REIMAGINING, & REBUILDING.

## 2022 ANNUAL REPORT

JULY 1, 2021 - JUNE 30, 2022



Planned Parenthood of the St. Louis Region  
and Southwest Missouri

# A MESSAGE FROM YAMELSIE

Thank you for remaining by our side through the toughest of times.

In our 90th year as a sexual and reproductive health care provider, the predictable worst happened: *Roe v. Wade* was overturned, upending five decades of the federal right to abortion. I can say with great pride that we lived and breathed our motto, “Care. No Matter What.”

For the majority of the time reflected in this report (July 2021 to June 2022), Planned Parenthood of the St. Louis Region and Southwest Missouri (PPSLRSWMO) dedicated its work to ensuring all aspects of our organization were ready to respond to the public health crisis we saw coming. As we braced for the impact of the Supreme Court of the United States’ decision to overturn *Roe*, we doubled down on our commitment to reflect, reimagine, and rebuild.

When I **reflect** back on our work leading up to June 24, 2022, the day *Roe* fell, it’s clear our work providing and advocating for sexual and reproductive health care access in Missouri and southern Illinois sharpened our ability to think boldly and innovate. We are battle tested. With every attack we withstood, we learned how to adapt. Frontline staff in health centers across Missouri and southern Illinois, call center teams, educators, and advocates kept marching forward for the countless patients we know depend on us for the kind of health care each of us deserves.

When we faced an attack, we fought back. When politicians compromised on our rights, we demanded more. With each new hurdle the PPSLRWMO team rose to meet the challenge, especially when abortion was banned in a dozen states including Missouri.

Let’s be honest, *Roe* was never enough, especially for people of color, people with low incomes, women, LGBTQIA+ communities, and other marginalized people who are forced to navigate racist and discriminatory systems. In recognizing this reality, we began to **reimagine** what meaningful access to health care, including abortion, could look like.

We launched programs that centered on principles of equity – launching the first-ever Regional Logistics Center (RLC) in the Planned Parenthood federation; providing free vasectomies during World Vasectomy Day celebrations; and under the new Biden administration, re-establishing Title X, the nation’s largest family planning program for low-income patients, at our health centers. Reimagining access means cutting ties with the status quo and embracing long-term change that addresses access for those who carry the heaviest burdens.

In PPSLRSWMO's 90th year, we laid a solid foundation on which we intend to **rebuild** access to all sexual and reproductive health care including abortion for all people, no matter where they live, who they are, or how much money they earn. This rebuilding doesn't happen without you.

Every day, I am in awe of the ways our community of supporters stood with us before and after *Roe* was overturned. We felt the outpouring of support from near and far. The year was certainly one that will live in infamy, but also one that solidified the strength and resolve of the Planned Parenthood community – patients, staff, advocates, activists, and you.

**It is because of your commitment and your unrelenting support, that we push forward for a future where health care is equitable, accessible, and a basic human right.**

**Thank you for standing with Planned Parenthood, today and always.** We hope the accomplishments included in this year's annual report fill you with hope and inspiration for the fight ahead.

In solidarity,  
Yamelsie Rodríguez  
President and CEO



## EVOLUTION OF CARE:

### Health Care Then, Now, and Tomorrow

PPSLRSWMO celebrated its 90th anniversary in 2022. Throughout its history, PPSLRSWMO has been a leading provider, educator, and advocate of sexual and reproductive health care and rights in the St. Louis region and Southwest Missouri.

What began as the Maternal Health Association of Missouri later evolved into a Planned Parenthood affiliate. PPSLRSWMO's staff and the number of supporters has grown since then, but the need for access to Planned Parenthood's services in this region remains as important as ever.

The past 90 years have not been easy, and we still face some incredibly tough fights. Your support ensures that Planned Parenthood has and will continue to evolve its health care – then, now, and tomorrow.

Thank you for being with us every step of the way.



# IMPROVING HEALTH EQUITY

PPSLRSWMO's health equity strategy centers communities most impacted by systems of oppression, disinvestment, and stigma; especially Black people and other people of color, LGBTQIA+ communities, young people, people who live in rural communities, and people with low incomes. PPSLRSWMO uses five pillars to inform strategies to advance a more just world for and with our collective communities.



## ELIMINATE RACISM, WHITE SUPREMACY, AND OTHER FORMS OF OPPRESSION

Equity transformation starts with looking inward. It is imperative to look internally at systems, practices, and policies to assess where inequities are produced and where equity can be proactively created. This requires identifying and committing to areas of transformation.

***In action:** Learn about how PPSLRSWMO's education team is innovating anti-racism work for sex educators on page 11.*

## MAKE HEALTH EQUITY A STRATEGIC PRIORITY

PPSLRSWMO leaders commit to improving health equity by including equity in the organization's strategy and goals. Equity is viewed as mission critical.

***In action:** Learn about how the Regional Logistics Center combats barriers to care on page 10.*

## BUILD INFRASTRUCTURE TO ADVANCE HEALTH EQUITY

Operationalizing a health equity strategy requires dedicated resources, including human and data resources, as well as organizational infrastructure.

***In action:** Learn about how an unprecedented investment is helping propel this work forward on page 14.*

## ADDRESS MULTIPLE DETERMINANTS OF HEALTH

Good health is influenced by your environment. Identifying social needs – behavioral health, food security, housing, education, economic opportunity, and more – is a critical component to addressing structural determinants of inequity.

***In action:** Learn about the TRANSforming Community, TRANSforming Care program on page 9.*

## PARTNER WITH THE COMMUNITY TO IMPROVE HEALTH EQUITY

Delivering on the goal of advancing health equity happens with community and partnership. We have an opportunity and a responsibility to listen to the needs of the communities we serve. By acknowledging PPSLRSWMO's role in establishing trust and relationships, supporting the political and social power of Black communities, uniting different stakeholders in a common agenda, and creating shared goals and measures, we can build an equitable and sustainable ecosystem that delivers better care to our patients.

***In action:** Examples of these partnerships include PPSLRSWMO's work with Hope Clinic, abortion funds, Metro Trans Umbrella Group, and the Missouri Omnibus coalition co-supported by Generate Health, as well as many others.*

# PREPARING FOR A POST-ROE REALITY

On June 24, 2022, the Supreme Court of the United States handed down its decision in *Dobbs v. Jackson Women's Health Organization*, overturning *Roe v. Wade* – ending the federal constitutional right to abortion. But even before *Dobbs*, Missouri continued to add new restrictions to abortion access. We saw the writing on the wall and spent years preparing for a solution to ensure access in the region.

We knew that we needed to prepare for the immediate impacts of a growing number of extreme abortion restrictions at home in Missouri and around the country, such as Texas's SB 8, and the impending *Dobbs* decision. Reproductive Health Services of Planned Parenthood of the St. Louis Region (RHS) leadership had a number of imperative questions to answer:

- How do we **connect patients living in states with restricted or no abortion access** to care?
- How do we **prepare for the anticipated surge** in patients attempting to access abortion in Illinois?
- How do we **remove barriers to care**, making it easier for patients to be able to receive care?
- How do we **center the communities that shoulder the heaviest burdens** when abortion is banned?

RHS responded with one mission in mind: centering patients, especially those most impacted by harmful restrictions and bans.

We developed a two-phased approach – starting with the opening of the Fairview Heights health center in Illinois in 2019, ensuring our ability to provide care in a state where abortion access is protected. And phase two – expanding abortion services alongside the opening of the Regional Logistics Center.

## CONNECTING PATIENTS TO CARE

In January 2022, in partnership and preparation with Hope Clinic, RHS launched the Regional Logistics Center (RLC). The RLC, located in Fairview Heights, Illinois, is a first-of-its-kind centralized patient navigation center to help ease patients' logistical burdens. Both Metro East abortion providers – Hope Clinic and RHS – arrange transportation, lodging, and procedural costs for patients as well as connecting patients with resources like abortion funds and practical support organizations in all 50 states and DC.

*Learn more about the RLC on page 10.*

## PROVIDING A FULL RANGE OF OPTIONS

RHS expanded the ways patients can access care by implementing telemedicine abortion and direct-to-patient abortion in Illinois. We added more clinical staff to ensure our Illinois health center was ready to respond when *Roe* fell.

# WHERE WE SERVE

**2** STATES

**8** HEALTH CENTERS

**98** COUNTIES

## MISSOURI

**7** Health Centers

**19,054** Unique Patients

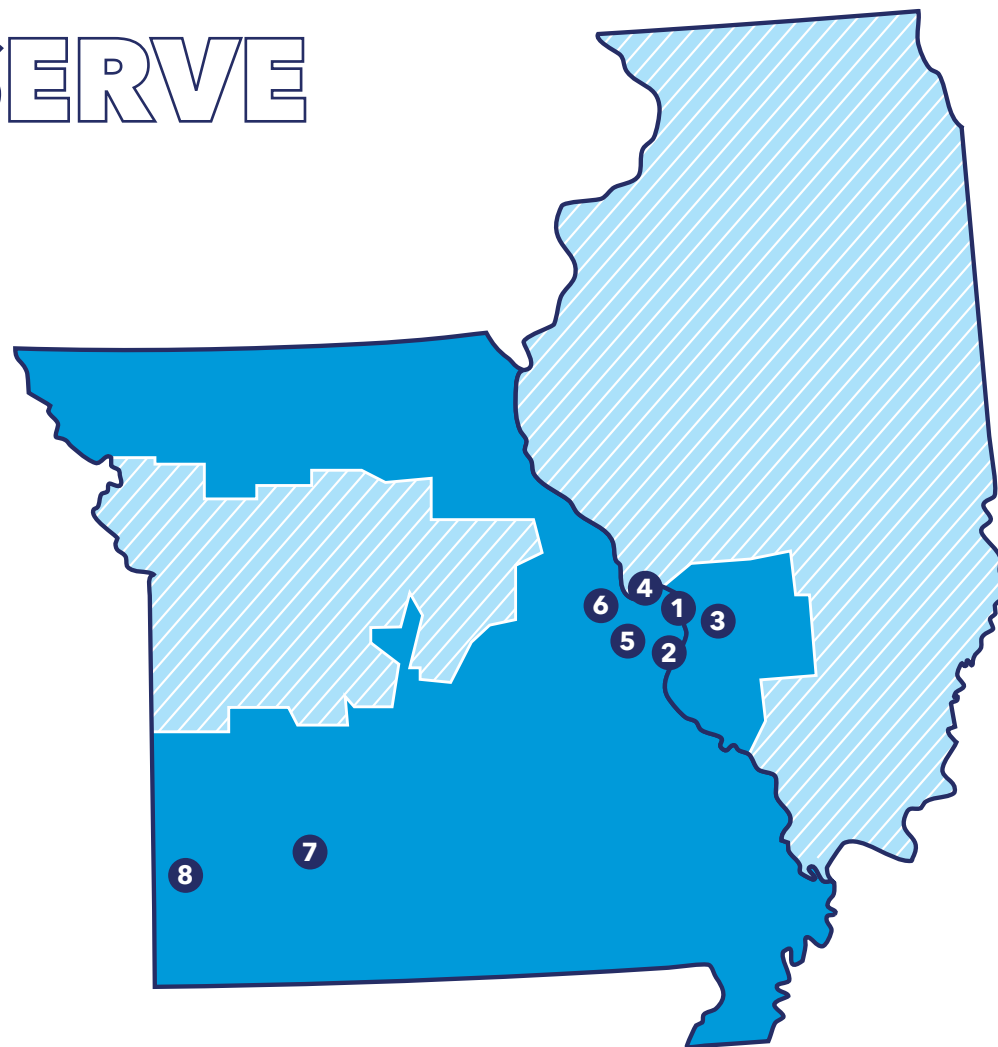
## ILLINOIS

**1** Health Center

**8,973** Unique Patients

## TELEHEALTH

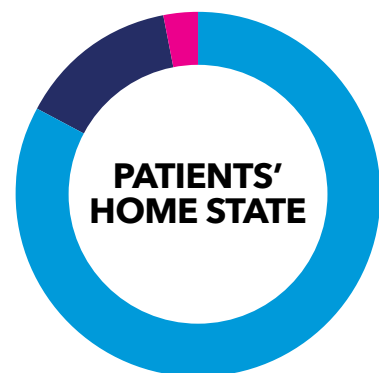
**3,178** Unique Patients



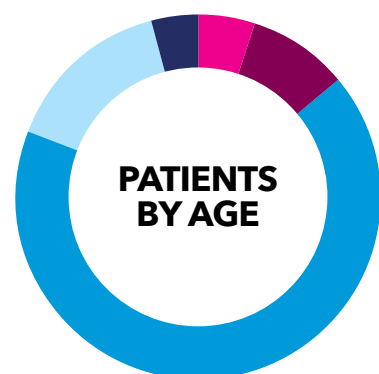
- 1** Central West End Health Center, Reproductive Health Services, Administration
- 2** South Grand Health Center
- 3** Fairview Heights, Illinois Health Center

- 4** North County Health Center
- 5** West County Health Center
- 6** St. Peters Health Center
- 7** Springfield Health Center
- 8** Joplin Health Center

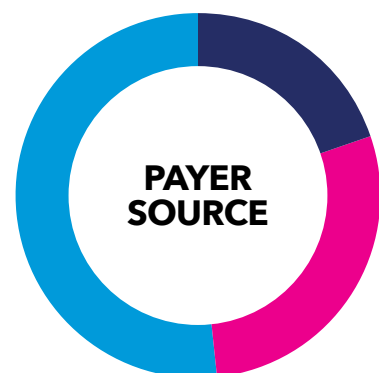
# WHO WE SERVE



- Missouri - 83%**  
24,441 unique visits
- Illinois - 14%**  
4,155 unique visits
- Other - 3%**  
938 unique visits



- Under 18 - 5%**
- Ages 18-19 - 9%**
- Ages 20-34 - 67%**
- Ages 35-44 - 15%**
- Ages 45 and older - 4%**



- Self Pay - 51.6%**  
23,189 visits
- Public (Medicaid & Medicare) - 19.8%**  
8,876 visits
- Commercial - 28.6%**  
12,852 visits

## PATIENTS BY GENDER IDENTITY



**22,658**  
Ciswomen



**3,718**  
Cismen



**451**  
Genderqueer / Non-Binary



**343**   **246**  
Transmen   Transwomen



**2,118**  
Unreported by Patient



# VISITS BY SERVICE

**44,917**

TOTAL PATIENT VISITS

**29,534**

TOTAL UNIQUE PATIENTS SERVED

## GENDER-AFFIRMING HORMONE THERAPY

**763** Unique Patients

**1,657** Visits

## STI SCREENINGS *Includes: GCCT, HIV, Syphilis, Trich, and Herpes tests*

**39,754**

## BIRTH CONTROL DISPENSED/PRESCRIBED

**14,007**

**6,680** DMPA/shot/injection

**3,743** Pills

**3,179** IUDs and Implants

**405** Other (Ring/Patch)

## ABORTIONS

**7,135**

**4,443** Medication Abortion  
*including telemedicine abortion*

**2,692** Procedural Abortion

## CANCER PREVENTION

**2,845**

*Includes: breast exams,  
HPV vaccines, pap smears,  
and biopsies*

**1,290**  
EMERGENCY  
CONTRACEPTIVES

**197**  
PrEP  
*(HIV Prevention)*

**183**  
VASECTOMIES



# ADVANCING HEALTH CARE **FOR ALL**

**PPSLRSWMO's focus on patient-centered care and research has the potential to improve health care and outcomes for the thousands of individuals and families we serve.** Understanding where inequities exist enables us to improve health equity by prioritizing and tailoring health care services to meet the needs of marginalized populations, including those experiencing adverse health outcomes.

## **Examples of recent or ongoing research projects include:**

- Studying Herpes Simplex Virus-2 (HSV-2) infections
- Exploring vaginal gel as an alternative method to STI prevention
- Assessing the acceptability, safety, and effectiveness of telemedicine abortion
- Researching the extended use and efficacy of contraceptive devices

## **RESEARCH PROGRAM OVERVIEW**

**5** Locations

**545** Total Research Participants

**12** Total Studies

## **CARE FOR EVERYBODY**

Amidst another unrelenting year of legislative attacks against the transgender community, Metro Trans Umbrella Group (MTUG) and PPSLRSWMO celebrated one year of the TRANSforming Community TRANSforming Care (TC2) program!

LGBTQIA+ people's reproductive health needs often go unmet by a system that has traditionally marginalized such care. One in five transgender adults report experiencing a barrier to health care due to cost. In addition to high rates of stress due to systematic harassment and discrimination, which has been shown to affect physical and mental health, LGBTQIA+ people face lower rates of health insurance coverage, and increased rates of HIV/AIDS and cancer. This is compounded for queer folks of color.

**Designed for and by the trans and non-binary community, TC2 expands health care services, conducts trauma-informed research, and builds a sex education curriculum centering the needs of the gender expansive community. Gender-affirming care is available at all Planned Parenthood locations in the St. Louis area, Springfield, and Joplin.**

# ABORTION ACCESS **FOR ALL**

The overturning of *Roe* continues to add to health disparities that disproportionately harm too many marginalized communities. Planned Parenthood invested nearly \$10 million in clinical capacity and infrastructure in preparation for more abortion bans and restrictions from neighboring and nearby states. The Regional Logistics Center opened publicly on January 21, 2022, with a ribbon cutting ceremony and virtual press conference to celebrate the 49th anniversary of *Roe v. Wade*. The RLC is a patient navigation hub that assists patients seeking care at RHS and Hope Clinic.

RLC case managers work with patients to arrange travel and lodging and connect patients with abortion funds and other practical support resources.

**We join our partners in committing to rebuilding this system equitably, for as long as it takes. We're not going anywhere. We're just getting started.**

## IMPACT

Financial support to patients is provided via RHS's patient equity fund and the support of local abortion funds across the country.

**\$2,443,325.31**

**Total \$ Provided in Financial Assistance\***

**\$1,991,357.82**

**Support Provided by Abortion Funds**

**\$451,967.49**

**Travel and Lodging Assistance Provided by RHS**

**\$900-\$1100**

**Average Assistance Per Patient**

*\*To showcase the impact of the RLC in its first full year of service and post-Dobbs, the following data is for the calendar year 2022. Eighty-five percent of costs were incurred post-Dobbs, July to December 2022.*

We are grateful to the Mildred Herbert & Julian Simon Foundation for their generous and historic contribution to support abortion access.





## EDUCATION

The PPSLRSWMO education team's mission is to provide comprehensive and age-appropriate sex education that empowers individuals to make well-informed decisions regarding their sexual health across their lifespan and to provide educational services and anti-oppression training in a manner that promotes social justice and freedom from ALL forms of oppression.

### SEAT

In 2022, PPSLRSWMO rolled out Sexuality Educator Anti-Racist Training (SEAT), a training program developed by Dr. Lexx Brown-James, to empower sex educators with skills to confront, interrupt, de-construct, and challenge racism in ways that go beyond decentering whiteness.

SEAT can influence generations of sexuality educators to reimagine ways to address and challenge harmful sexual health rhetoric on individual and systemic levels. After SEAT, sexuality educators have increased knowledge of effective responses to racist incidents, and leave with a practical plan for applying those skills to reduce harm, interrupt racism, and provide trauma-responsive education – giving actionable and applicable strategies for healing, externalizing, and addressing racism within sexuality education.

## IMPACT

**145**

Education Sessions Held

**282**

Hours of Education Sessions and Trainings Led by PPSLRSWMO Staff

**581**

Participants Completed ≥1 Session in FY22

**2,458**

Total Education and Training Programming Participants

**100+**

Books and Teaching Modules Updated in PPSLRSWMO's Sunnen Family Library

### SESSIONS BY SETTING

46	57	36	6
PPSLRSWMO	Schools	Community-Based Organizations	Other

### PARTICIPANTS TRAINED BY PROFESSION

208	62	83
Medical Professionals	Community Health Pros	PP & Peer Educator Staff

# ADVOCACY

**Advocates of Planned Parenthood of the St. Louis Region and Southwest Missouri** is a 501(c)(4) nonprofit organization that primarily engages in education, lobbying, organizing, and other social welfare activities. Advocates' work is two-fold: to advance legislation and policies that improve sexual and reproductive health care and to empower and energize supporters to use their voice to educate and fight for more just and equitable health outcomes.

## FIGHTING FOR PATIENTS AND PROVIDERS IN MISSOURI AND ILLINOIS

Advocates continued to show up in Jefferson City, MO, Springfield, IL, and every community in between, to fight for patients and providers. We worked in coalition, mobilized our supporter base, empowered youth advocates, and expanded partnerships with activists and organizations focused on improving health outcomes for all.

We joined a steering committee to launch Missouri MOMnibus, a statewide coalition of birth workers and maternal health advocates, co-supported by Generate Health, dedicated to transforming Black maternal health.

In Illinois, we worked alongside coalition partners to repeal a harmful requirement that minors seeking abortion notify a parent before obtaining an abortion. And on June 1, 2022, we celebrated when that law was formally repealed.

## FIGHTING FOR ALL ON THE NATIONAL STAGE

Increasingly, we took our voice to the national stage as the Missouri Legislature and Governor Mike Parson renewed unconstitutional and cruel attacks against patients. Our bold approaches brought national attention and urgency to state-led attacks, including those on nationally administered programs such as Medicaid.

After repeated attacks against Missouri Medicaid patients, PPSLRSWMO joined other “defunded” states in launching a nationwide petition calling on the Biden administration to enforce federal law, which protects every Medicaid patient’s freedom to choose any qualified provider, including Planned Parenthood.

PPSLRSWMO was hosting a roundtable with the U.S. Department of Health and Human Services Secretary Xavier Becerra when the *Dobbs* decision came down. It was at this table that providers and advocates rang the alarm bells for the country's top health care official that another public health emergency was about to begin. Sec. Becerra spent that day hearing from providers and advocates and touring the Fairview Heights health center.





## IMPACT

**10,659**

Phone Dials

**42,480**

Text Messages Sent

**1,455**

Volunteer  
Shifts Filled

**2,559**

Volunteer  
Hours Worked

**96**

Advocacy and Community  
Engagement Events

**4**

Generation Action Chapters  
on College Campuses

**1**

Action Council

**35**

Patient Greeters in 62 Shifts

**8**

Patients and Supporters  
Who Shared Their Story Publicly



# 1 PROMISE; 4 AFFILIATED ORGANIZATIONS

## Care. No matter what.

**Planned Parenthood of the St. Louis Region and Southwest Missouri (PPSLRSWMO)** is a 501(c)(3) health care, patient focused organization that provides, protects, and supports sexual and reproductive health services, access, and rights.

*Donations to PPSLRSWMO are tax-deductible and may be anonymous.*

**Reproductive Health Services of Planned Parenthood of the St. Louis Region** is a 501(c)(3) health care, patient focused organization that is committed to supporting any person facing a high-risk, complicated, or unintended pregnancy. RHS provides abortion services at the Fairview Heights health center in Southern Illinois.

*Donations to RHS are tax-deductible and may be anonymous.*

## Act. No matter what.

**Advocates of Planned Parenthood of the St. Louis Region and Southwest Missouri** is a 501(c)(4) social welfare organization focused on advancing, improving, and stopping legislation that affects patients of Planned Parenthood.

*Donations to Advocates are not tax-deductible and may be anonymous.*

**Planned Parenthood Votes - St. Louis and Southwest Missouri** is a 527 nonprofit organization - Missouri Political Action Committee (PAC) - dedicated to the election of state and local candidates who support Planned Parenthood.

*Donations to Votes are not tax-deductible and must be reported to the Missouri Ethics Commission.*

## HISTORIC CONTRIBUTION FROM MACKENZIE SCOTT

In 2022, PPSLRSWMO received a \$9 million gift from Mackenzie Scott. We were humbled and honored to receive this one-time gift, the largest in our 90-year history. Her gift brings visibility to the critical work happening right here, right now, in Missouri and Illinois.

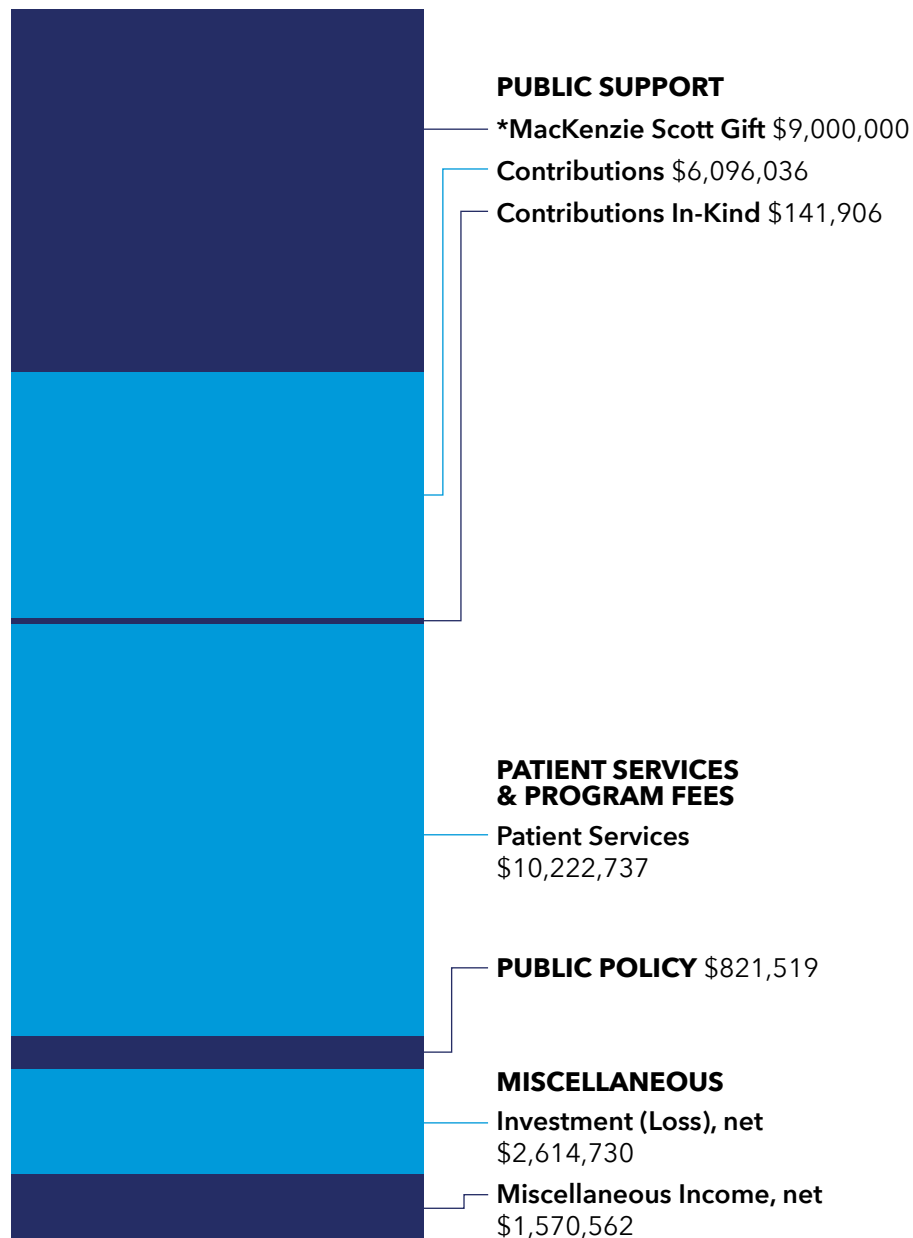
This unrestricted gift empowers us to push forward during one of the most challenging moments in the sexual and reproductive health and rights movement.

To meet the ever-evolving needs of patients and adapt to the changing political landscape, we will use her gift to support the following programs and needs:

- **Patient Access Fund:** Further expand patient access initiatives including increasing patient navigation and practical support to help patients access health care.
- **Expand Infrastructure and Capacity:** Attract and retain medical and administrative employees to meet the needs of patients.
- **Build Resiliency:** As the political landscape shifts, this gift will help ensure the organization can adapt and respond to the challenges and demands of providing abortion and family planning services continue to rise.

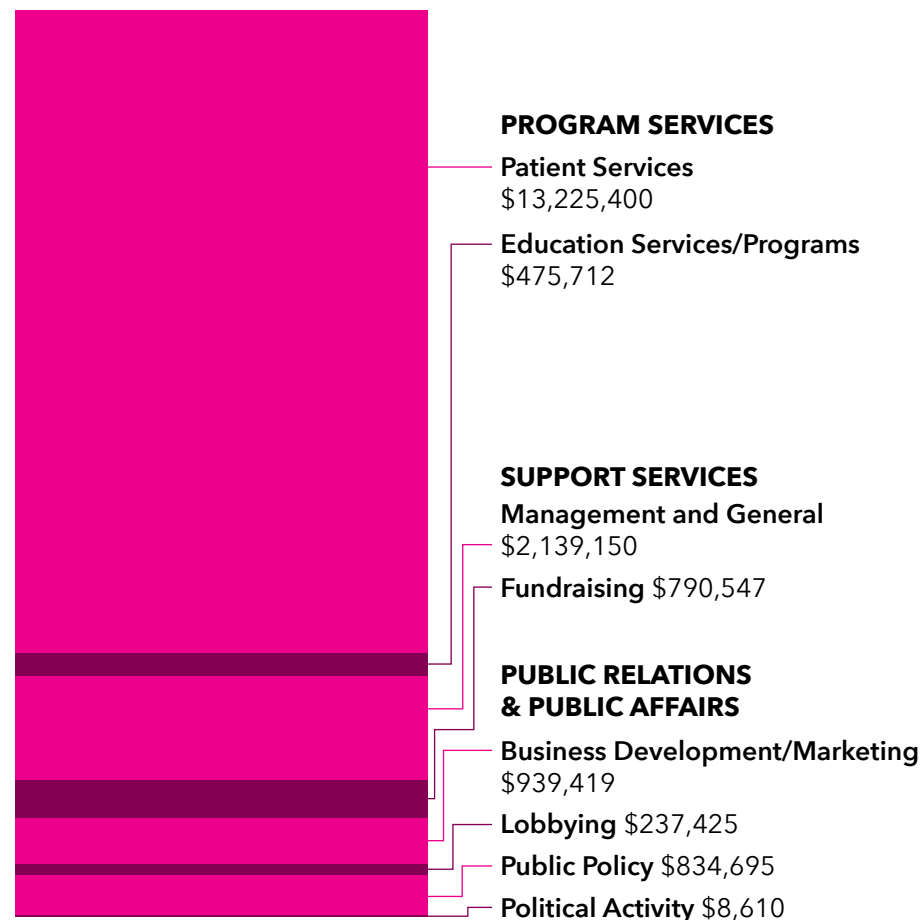
With her gift, Ms. Scott joins the ranks of amazing donors and supporters right here in our community who have fueled us forward throughout our 90 years! We are grateful to donors like you who have been with us every step of the way. Together, we will rebuild a future where abortion, birth control, STI testing and treatments, and all reproductive health care is accessible and affordable, no matter what.

# REVENUE: \$25,238,030



FY2021-2022 Surplus  
**\$6,587,072**

# EXPENSES: \$18,650,958



\*This was a one-time investment by philanthropist MacKenzie Scott. You can learn more about the impact of this gift on page 14 of this report.

## **BOARD OF DIRECTORS EXECUTIVE COMMITTEE**

### **Board Chair**

Shonagh Clements

### **Vice Chair and Treasurer**

Christina Cavazos Bennett

### **Vice Chair**

Linda Raclin

### **Secretary**

Dr. Jacqueline Turner

### **Asst. Treasurer**

David Goerisch

## **BOARD COMMITTEE LEADERS**

### **Audit & Finance**

Christina Cavazos Bennett

### **Development**

Deborah Patterson

### **Education**

Susan Appleton

### **Leadership & Governance**

Linda Raclin

### **Legislative & Political**

Maureen Jordan

## **BOARD OF DIRECTORS**

Susan Appleton

Christina Cavazos Bennett

Shonagh Clements

Joan Culver\*

Erika Dahlin-Lee\*

Alissa Duel

David Goerisch

Sheila Greenbaum

Jaimie Hileman

Amy Hunter

Adella Jones\*

Maureen Jordan

Jessica Levy

Linda Locke

Dr. Julia Lopez

Steve Novik

Kim Olson

Deborah Patterson

Linda Raclin

Dana Sandweiss\*

Sally Scott

Andrew Shaughnessy

Jennifer Shaw

Miriam Singer

Rose-Lynn Sokol

Susan Stiritz\*

Jay Summerville

Amy Soper\*

Dr. Heidi Tastet

Dr. Jacqueline Turner

Bob Watt

Vivian Zwick

## **SENIOR STAFF**

### **President and Chief Executive Officer**

Yamelsie Rodríguez

### **Chief Medical Officer**

Colleen McNicholas, DO, MSCI, FACOG

### **Senior Vice President Administration and Compliance**

Cathy Williams

### **Vice President of Development**

Toni Schneider Finch

### **Vice President of Education, Policy & Community Engagement**

Angie Postal

### **Vice President of Finance**

Bill Dean

### **Vice President of Health Equity and Culture**

April Mickens Jolly

### **Vice President of Strategy and Communications**

Bonyen Lee-Gilmore

### **General Counsel and Chief Compliance Officer**

Richard Muniz

*\*Board Term began or ended at calendar year 2021/2022*



Planned Parenthood of the St. Louis Region  
and Southwest Missouri